



# MAST Racing 2023 Summer Series

May 26 – September 16, 2023

Milwaukee Bay, Milwaukee, Wisconsin

## NOTICE OF RACE

### 1. RULES

- 1.1. The race series will be governed by the rules as defined in *The Racing Rules of Sailing for 2021 - 2024*.
- 1.2. 'Safety First' is THE most important rule for MAST racers. The MAST Racing Series is structured to allow a safe and supportive environment for sailors and families who want to try their hand at racing. Our emphasis is on learning and having fun. We encourage sailors of all abilities and experience to join.

### 2. SAILING INSTRUCTIONS

- 2.1. The sailing instructions will be available at <https://mastracing.org/forms-docs> by May 15, 2023
- 2.2. The sailing instructions will consist of the instructions in RRS Appendix S, Standard Sailing Instructions, and supplementary sailing instructions that will be on <https://mastracing.org/forms-docs>.

### 3. COMMUNICATION

- 3.1. All official notices will be posted on <https://mastracing.org/forms-docs>
- 3.2. All boats shall carry a VHF radio capable of communicating on channel 79.

### 4. ELIGIBILITY AND ENTRY

- 4.1. The MAST Summer Racing Series is open to all seaworthy sailboats appropriate for the waters within 4 nautical miles of the Breakwater Light marking the “center gap” entrance to Milwaukee Harbor on Lake Michigan in Milwaukee, Wisconsin.
- 4.2. Eligible boats may enter by completing the form available at and paying the appropriate fees at <https://mastracing.org/join-us> by May 19, 2023
- 4.3. To be considered an entry in the event, a boat shall complete all registration requirements and pay all fees.
- 4.4. **Registrations must be received by May 19, 2023 to participate in the first race.**

- 4.5. Late entries will be accepted if space is available in the appropriate division.
- 4.6. Late entries must be registered by the Monday preceding the race to participate in that week's race.
- 4.7. MAST reserves the right to limit the number of entries for safety.
- 4.8. Guest Boat: Skippers **new to MAST** may race their boat in one race as a guest as follows:
  - 4.8.1. The skipper notifies the Race Committee no later than the Monday before the race they intend to sail via email at [racechair@mastracing.org](mailto:racechair@mastracing.org)
  - 4.8.2. The Race Chair will provide sailing instructions and indicate the proper start time.
  - 4.8.3. The guest boat will be timed and adjusted times will be posted. The guest boat will not be scored in any division or in the fleet.
  - 4.8.4. If the guest boat subsequently registers, the boat will be placed in a division and scored for the guest race. Previously registered racers will retain their scores for the race. (Scores will not be adjusted as a result of adding the guest boat).

## 5. FEES

5.1. Required fees are as follows:

<b>Membership Type</b>	<b>Fee</b>
<i>Racing Member</i>	\$85.00
(includes Skipper and Vessel registration)	
<i>Crew/Social Member</i>	\$30.00
(all regularly participating crew, additional owners, and social members)	

## 6. SCHEDULE

6.1. Races will be held on Friday nights as follows:

- May 26
- June 2, June 9, June 16, June 23, June 30
- July 7, July 14, July 21, July 28,
- August 4, August 11, August 18, August 25,
- September 1, and September 8
- Make up race date reserved is September 15
- The Almost Fall Regatta (a fun race outside of the race series) will be held on Saturday September 16

6.2. The warning signal for the first start shall be at 6:10 pm

## 7. SCORING

7.1. The scoring system is as follows; this changes RSS 90.3.

7.2. The **minimum number of races** a boat must sail to qualify for the prizes in the Division or MAST Cup shall be **10 of the possible 16 races**. If races are canceled or abandoned, the number of races needed to qualify will be 1/2 the number of races held, rounded down, plus 2 (e.g., 15 races => 9, 14 races => 9, 12 races => 8, etc.)

7.3. In the event of a tie at the end of the season, both boats will be awarded the earned position. There are no tie breakers.

7.4. **Division Scoring:** Division standings will be calculated using the **best of the minimum number of races** (10 of 16 if no races are canceled or abandoned).

7.5. **Fleet Scoring:** Fleet standings are calculated using the **best 14 of the possible 16 races** (or best of the adjusted minimum number of races minus 2).

7.6. **Spinnaker Scoring:** Boats sail using the HCP (spinnaker) PHRF. Boats who do not declare a spinnaker receive a time reduction of 14 seconds per 10 minutes sailed.

### 7.7. Committee Boat Scoring:

7.7.1. Individual registered boats may be asked to serve as Committee Boat once during the season. A boat that does not race because of Committee Boat obligations will be given a score of 1.25 an “almost 1<sup>st</sup> place” for the race. This score will be awarded even if a race is canceled or abandoned, so long as a good faith effort is made to conduct the race.

### 7.8. Canceled Race Scoring:

7.8.1. A canceled race is one in which no boats starts and is scored:

7.8.2. All boats are scored 0 for the race

7.8.3. The following points are added to the final division and fleet scores for the canceled race.

- Committee Boat: 1.25
- All other boats: 2

### 7.9. Abandoned Race Scoring:

7.9.1. A race started but then abandoned is scored:

7.9.2. All boats are scored 0 for the race

7.9.3. The following points are added to the final division and fleet scores for the abandoned race.

- Committee Boat: 1.25
- Boats checked-in to race: 2

- All other boats: 3

#### **7.10. Guest Skipper Point Reduction:**

**7.10.1.** Experienced skippers who serve as mentors on another boat with a less experienced skipper for at least one race during the season will receive a one-time-only, 0.5pt deduction from their series point total, provided their boat does not race.

#### **7.11. Division Splits:** The fleet is scored in four separate divisions.

**7.11.1.** The groupings for the divisions are based upon a boat's PHRF rating, size, and maneuverability and determined by the Race Chairperson. The objective is to balance each division's relative handicaps and performance to create fun competition throughout the entire season.

**7.11.2.** The groupings for the divisions are determined after the Spring Skipper's Meeting (May 9<sup>th</sup>) and prior to the first race. Contact the Race Chairperson if you are unsure of your division or need a PHRF assignment.

**7.11.3.** Boats without a valid PHRF rating will be assigned a PHRF based on sister ships registered with the **Midwest Performance Handicap Racing Fleet** (MWPHRF) database (the LMPHRF merged with the Detroit PHRF association to become MWPHRF), or similar source. If no similar handicapping data is available, a PHRF will be assigned based on the best judgment of the Race Chairperson.

#### **7.12. Week-to-Week PHRF Adjustment:**

**7.12.1.** MAST encourages members, especially new and less experienced racers, to come out to race every week. At the same time the scoring system must present a sufficient challenge to those who are experienced racers. To that end, all boats start out with their assigned PHRF rating and then after each race the ratings are adjusted based on how a boat placed in the race. The PHRF rating of those who finish first, second and third in their division or fleet are adjusted down (forcing them to "give more time" to other boats). The fourth-place boat is not adjusted. All others competing have their PHRF increased slightly (giving them a better chance next race).

**7.12.2.** Detailed information about the scoring and PHRF system will be available by May 20 at <https://mastracing.org/forms-docs>

### **8. RISK STATEMENT**

**8.1.** RRS 3 states: 'The responsibility for a boat's decision to participate in a race or to continue to race is hers alone.' By participating in this event each competitor agrees and acknowledges that sailing is a potentially dangerous activity with inherent risks. These risks include strong winds and rough seas, sudden changes in weather, failure of equipment, boat handling errors, poor seamanship by other boats, loss of balance on an unstable platform and fatigue resulting in increased risk of injury. **Inherent in the sport of sailing is the risk of**

**permanent, catastrophic injury or death by drowning, trauma, hypothermia, or other causes.**

**9. INSURANCE**

**9.1.** Each participating boat shall be insured with valid third-party liability insurance with a minimum cover of \$300,000 per incident or the equivalent.

**10. FURTHER INFORMATION**

**10.1.** For further information please contact [racechair@mastracing.org](mailto:racechair@mastracing.org).

# MAST Racing

## 2023 Summer Series

May 26 – September 15, 2023

Milwaukee Bay, Milwaukee, Wisconsin

### SAILING INSTRUCTIONS

#### 1. RULES

- 1.1. Except as expressly modified, the race series will be governed by the rules as defined in *The Racing Rules of Sailing for 2021 - 2024*.
- 1.2. Skippers shall (and crew are encouraged to):
  - 1.2.1. Review the 2021-2024 Sailor's Guide to the Racing Rules
  - 1.2.2. Attend the MAST Skippers Meeting (in-person, virtual, or recorded)

#### 2. CHANGES TO SAILING INSTRUCTIONS

- 2.1. Any change to the sailing instructions will be posted by 0900 on the day it will take effect at <https://mastracing.org/forms-docs>. An email notification will be sent to all members of the fleet.
- 2.2. Changes to the sailing instructions may be made on the water via VHF radio on channel 79.

#### 3. COMMUNICATION WITH COMPETITORS

- 3.1. All official notices will be posted on <https://mastracing.org/forms-docs>
- 3.2. On the water, the race committee intends to monitor and communicate with competitors on VHF radio channel 79.
  - The following communications may be made by the race committee on VHF radio channel 79: time checks, race area, schedule changes, starting order of divisions, location of race committee vessel, courses, change of courses, shortening, postponement, abandonment, starting signals, recalls, and next start sequence.
- 3.3. A boat shall not make or receive voice or data transmissions regarding racing conditions that is not available to all boats.

#### 4. CODE OF CONDUCT

- 4.1. Competitors and support persons shall comply with reasonable requests from race officials.

## 5. SCHEDULE OF RACES

5.1. Races will be held on Friday nights as noted in the table below.

Date	Event	Course
May 26	<b>Race 1</b>	W/L No Spinnaker
June 2	<b>Race 2</b>	W/L
June 9	<b>Race 3/Pizza Party</b>	W/L No Spinnaker
June 16	<b>Race 4</b>	Triangle
June 23	<b>Race 5</b>	Distance
June 30	<b>Race 6</b>	Triangle
July 7	<b>Race 7</b>	W/L No Spinnaker
July 14	<b>Race 8</b>	Triangle
July 21	<b>Race 9</b>	W/L
July 28	<b>Race 10</b>	Triangle
August 4	<b>Race 11</b>	Distance
August 11	<b>Race 12</b>	Triangle
August 18	<b>Race 13/Pizza Party</b>	W/L
August 25	<b>Race 14</b>	Triangle
September 1	<b>Race 15</b>	W/L
September 8	<b>Race 16</b>	W/L No Spinnaker
September 15	<b>Make up race (if needed)</b>	TBD
September 16	<b>Almost Fall Regatta</b>	TBD

5.2. A makeup race will be sailed if 3 or more races are cancelled.

5.3. The Almost Fall Regatta (AFR) is a fun race outside of the race series held on Saturday September 16

5.4. The scheduled time of the warning signal for the first start of each race is 6:10 pm CT.

## 6. Division FLAGS

6.1. The division flags will be:

<i>Division</i>	<i>Flag</i>
Division 1	Green Flag
Division 2	Yellow Flag
Division 3	Blue Flag
Division 4	White Flag

## 7. RACING AREA

7.1. The waters within 4 nautical miles of the Breakwater Light marking the “center gap” entrance to Milwaukee Harbor on Lake Michigan in Milwaukee, Wisconsin.

## 8. COURSES

8.1. Attachment A shows the courses.

8.2. All courses are sailed leaving all marks to port as they are rounded.

## 9. MARKS

9.1. Approximate GPS Mark Locations and Descriptions:

- MAST: N43 02.195 W87 50.764 (Orange Post with light)
- SSYC W: N43 00.041 W87 51.152 (4' Orange Sphere with “W” and a light)
- SSYC C: N43 00.338 W87 49.839 (Orange Cylinder with “C” and white horizontal stripe)
- Bell Buoy: N42 59.349 W87 49.839 (Green Navigational)
- Start/Finish mark: Orange inflatable. In the event of a West wind on a W/L course, the start/finish mark may be the MAST mark and the windward mark will be an orange inflatable.

## 10. OBSTRUCTIONS

10.1. The following areas are designated as obstructions:

- The break wall bounding the outer harbor.
- Fishing nets deployed within 1 mile of the MAST Mark

## 11. THE START

11.1. Races will be started by using rule 26 with the warning signal made 5 minutes before the starting signal. The warning signal for each succeeding division shall be the start signal for the preceding division. See Attachment B for full descriptions of signals and times.



- 11.2. The starting line will be between an orange flag displayed on the committee boat anchored at the starboard end and the course side of the port-end starting mark.
- 11.3. After the first warning signal has been made, **boats shall avoid the starting area until their preparatory signal.** The start area is defined as a rectangle drawn 100 ft out on each extension and 150 feet to the non-course side of the start line. See Attachment C. The penalties for being in the start area when not racing and/or interfering with boats who are racing within the start area are:
- First violation: 1 point added to the score for the race in which it occurred.
  - Second violation: 2 points added to the score for the race in which it occurred.
  - Third violation: DSQ from the race in which it occurred.
- 11.4. If any part of a boat's hull is on the course side of the starting line within one minute of her starting signal, **she shall keep clear of other boats and sail across an extension** (the start line extended beyond/outside the pin or Committee Boat) so that her hull is completely on the pre-start side before she starts (i.e. she must re-enter the starting area from outside of the pin or Committee Boat to in order to start). This modifies RRS rule 29.1. Boats that are over-early at the start and do not (re)start will be scored OCS. The committee boat will *attempt* to hail any offending boats by horn and radio. All boats must (should) monitor channel 79.
- 11.5. External propulsion is not allowed once the warning flag for a boat's division has been raised. This is a local rule modification.
- 11.6. **In no case shall a boat start a race under Spinnaker sail.** This includes having a sail, pole, or other hardware set in a manner that would restrict a boat's ability a tack or jibe prior to the race start. In the event a boat is in violation of these rules, that boat shall be scored DNS.

## **12. CHANGE OF THE NEXT LEG OF THE COURSE**

- 12.1. If a race must be shortened, the committee boat will move and anchor at the new finish and announce the change via VHF radio.

## **13. THE FINISH**

- 13.1. The finishing line will be between an orange flag displayed on the committee boat anchored at the starboard end and the course side of the port-end starting mark.

## **14. TIME LIMITS**

- 14.1. If no boat has passed the first mark by 7:15 pm, the race shall be abandoned.
- 14.2. If no boat has finished the race by 8:30 pm, the race shall be abandoned.

- 14.3. Boats that do not reach the finish by 9:00 pm will be scored DNF.  
Committee boats may choose to extend this time limit if boats are near to the finish line at 9:00 pm.

## **15. HEARING REQUESTS**

- 15.1. The following changes RSS 61.1(a) Informing the Protested:

### **IF YOU ARE FOULED**

- A. Avoid Contact!
- B. Take a deep breath and remember we are all here to have fun.
- C. If you believe you've been fouled, hail the offending boat saying "PROTEST" and the BOAT NAME (declaring loudly enough for the other boat to hear or using the VHF radio), and raise a red flag on the stern of the boat if you have one.
- D. Once onshore, if you intend to pursue the protest, you must notify the Race Committee Chairperson of your protest, including a description of the incident and the racing rules you believe were violated, within two hours after the last boat finishes the race.

### **IF YOU FOUL ANOTHER BOAT**

- A. Avoid Contact!
- B. Take a deep breath and remember we are all here to have fun. If there is any possibility you impeded the progress of another boat or caused a dangerous condition, in the spirit of MAST, treat the incident as a foul.
- C. If you believe you fouled another boat, get clear of all other boats, and do two complete circles in the same direction. Once the circles are complete, you can rejoin the race without further penalty.
- D. If you do not think there was a foul, continue sailing the race with the understanding that you are racing under protest.
- E. Once the race is complete, you will be contacted by the Race Chairperson if a protest has been filed by the other boat. The Race Chair will ask for an account of the event from the person in charge of your boat and other eyewitnesses.

- 15.2. The following changes RSS 63 Hearings.

All protests and requests for redress will be heard and decided by majority vote of the Race Committee, which shall consist of the Race Committee Chairperson and two other MAST members who are knowledgeable about the Racing Rules of Sailing and who were not aboard the boats involved in the protested incident.

If the Race Committee Chairperson was aboard one of the boats involved in the protested incident, the Commodore shall appoint a MAST member not involved in the protested incident to serve as a substitute Race Committee Chairperson, who shall choose the other members of the Race Committee and consider the protest.

The penalties shall be determined at the sole discretion of the Race Committee and can be, but are not limited to, loss of one place in the finish, disqualification from the race, and suspension for one or more races. The decision of the Race Committee is final. In the event a boat is protested and found to be in violation of the racing rules twice during a season, the Race Committee may suspend a boat's racing privileges for up to the remainder of the season. If a boat files more than two protests that are found to be without merit, that boat may also be subject to penalty within the sole discretion of the Race Committee.

## **16. SCORING**

- 16.1. The scoring system is described in the Notice of Race and in detail at <https://mastracing.org/forms-docs>

## **17. SAFETY REGULATIONS**

- 17.1. A boat that retires from a race shall notify the race committee via VHF radio channel 79 at the first reasonable opportunity.
- 17.2. MAST Safety Recommendations:
- 17.2.1. Each captain is responsible for the safety of all persons aboard during MAST racing activities.
- 17.2.2. Boats are encouraged to have ready a boarding ladder, a cushion or ring buoy ready to throw, a whistle or horn, and an anchor with line.
- 17.3. MAST strongly encourages the use of USCG-approved Personal Flotation Devices (PFDs) by all persons aboard.
- 17.4. MAST strongly encourages having a VHF radio aboard and monitoring 79.
- 17.5. Crew overboard practice drills are strongly encouraged.
- 17.6. In an emergency, boats are required to render assistance to another boat or crew member as needed. Any boat that stops to render assistance in an emergency to another boat or crew member during a MAST event will be granted redress under RRS 62.1 (c)

## **18. EQUIPMENT AND MEASUREMENT**

- 18.1. Measurement is not required. Boats with a valid handicap, rating, or class measurement certificate shall provide the certificate for determination of racing handicap. Boats without a certificate shall be provided a handicap by the Race Chairperson based on boats of similarity and documentation provided.

- 18.2. Whenever a MWPHRF handicap is available for the MAST boat or a similar boat, it shall be used in lieu of other ratings providing there are no other determining factors for adjustment.
- 18.3. Whisker poles or spinnaker poles that attach to the mast are allowed. Other poles (boathooks etc.) that are continuously handheld are also allowed. The pole must be applied to the clew of the headsail or the sheet near the clew. It is recommended that Crew tending whisker poles should wear PFDs and not lean out over the lifelines. Whisker poles may be employed on either the same or opposite side as the main boom.
- 18.4. There are no restrictions on the length, use, or type of whisker pole other than those noted above.
- 18.5. Spinnakers, and cruising spinnakers flown from a pole, are allowed only for specific races as noted in the Schedule.
- 18.6. Reachers and other light air headsails that attach to the forestay and can be rated as genoas are allowed. Asymmetric spinnakers that exceed 160% of "J" are considered in the same category as symmetric spinnakers.
- 18.7. When spinnakers are allowed in specific races, a boat wishing to use a spinnaker must advise the committee boat when checking in. **This declaration should be made before the first warning signal at 6:10.** Not confirming the intention to use a spinnaker with the race committee may cause a boat to incur an additional 5-minute penalty.

## PRIZES

- 18.8. Division **award flags** will be given for:
  - 18.8.1. Division 1: 1<sup>st</sup>, 2<sup>nd</sup>, 3<sup>rd</sup>, 4<sup>th</sup>, 5<sup>th</sup> Place
  - 18.8.2. Division 2: 1<sup>st</sup>, 2<sup>nd</sup>, 3<sup>rd</sup>, 4<sup>th</sup>, 5<sup>th</sup> Place
  - 18.8.3. Division 3: 1<sup>st</sup>, 2<sup>nd</sup>, 3<sup>rd</sup>, 4<sup>th</sup>, 5<sup>th</sup> Place
  - 18.8.4. Division 4: 1<sup>st</sup>, 2<sup>nd</sup>, 3<sup>rd</sup>, 4<sup>th</sup>, 5<sup>th</sup> Place
- 18.9. The perennial **MAST Cup** will be given to the boat of the year as described in section 7.5 of the Notice of Race.
- 18.10. The perennial **Almost Fall Regatta Cup** based on the Notice of Race for that event.
- 18.11. Other awards may be presented at the discretion of the Race Committee and/or Board include:
  - 18.11.1. **Rookie of the Year:** The MAST board may give this award to a skipper or skippers new to the sport of sailboat racing. Eligible skippers are within their first 3 seasons of MAST Racing Membership (not social/crew

membership), in their first 3 years of skippering a race boat and qualified for a division prize for the first time in the current season. This award considers division ranking, sportsmanship, and enthusiasm for MAST.

18.11.2. **Spirit of MAST** award may be presented in any given year to the MAST boat, couple, race member, or social member that has best represented the Spirit of MAST throughout their MAST membership. This award will be presented based on their:

- Fleet participation (number of races sailed and length of membership) and good sportsmanship.
- Above and beyond willingness to help with MAST activities and business needs.
- Encouragement of others, promotion of MAST in the community, and positive attitude.
- Current MAST Officers are not eligible for this award.

18.11.3. **Outstanding Committee Boat Award** may be presented to a crew that exhibits skill and good grace in performing duties and overcoming challenges. Current MAST Officers and their boats are eligible for this award.

18.11.4. **Cruiser/Racer Award** celebrates MAST members who desire to race in MAST and spread the word about MAST as they race and cruise throughout the Great Lakes flying the MAST burgee. The award considers cruising and racing miles outside of Milwaukee Bay and a willingness to promote MAST. A Cruiser/Racer Award committee collects information from the fleet and suggests candidates to the MAST Board. This award is presented at the discretion of the MAST Board. Current MAST Board members are not eligible.

Descriptions of these awards are available at <https://mastracing.org/forms-docs>

## 19. FURTHER INFORMATION

19.1. For further information please contact [mastracechair@gmail.com](mailto:mastracechair@gmail.com).

## Attachment A COURSES

The course will be selected for each race from one of the *four* courses as described herein. Refer to SCHEDULE OF RACES for determination of course. The Committee Boat may modify the course if conditions require.

All courses are sailed leaving all buoys to port, as they are rounded.

Boats may set a spinnaker in the races noted in the schedule of races and must notify the race committee they will fly a spinnaker during check-in.

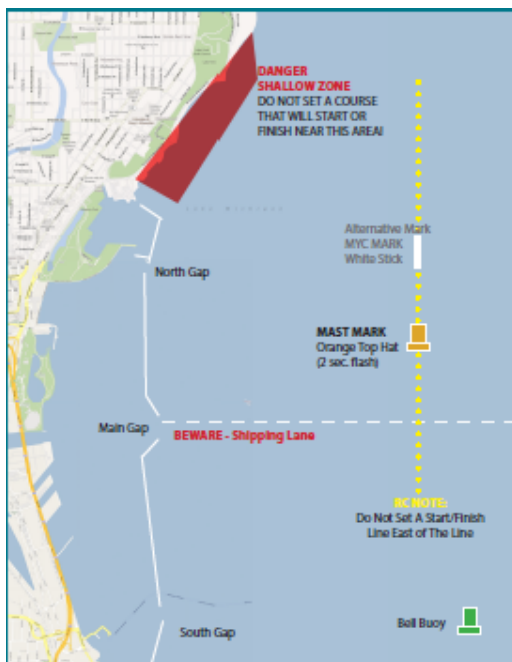
Approximate GPS Mark Locations:

- MAST: N43 02.195 W87 50.764
- SSYC W: N43 00.041 W87 51.152
- SSYC C: N43 00.338 W87 49.839
- Bell Buoy: N42 59.349 W87 49.839

Courses will be as shown in the following illustrations:

### Windward – Leeward Course

**A Windward -- Leeward Course** will run from a line set by the Committee Boat and an inflatable mark approximately one mile up wind to the MAST Mark and back to the inflatable buoy used for start. However, the Committee Boat must stay West of North / South Line through the MAST Mark for Windward/Leeward and Distance Races. In



Westerly winds, the Committee boat will place the inflatable mark 1 mile downwind of the MAST mark and use it as the windward mark. The start line is then set between the Committee Boat and the MAST Mark.

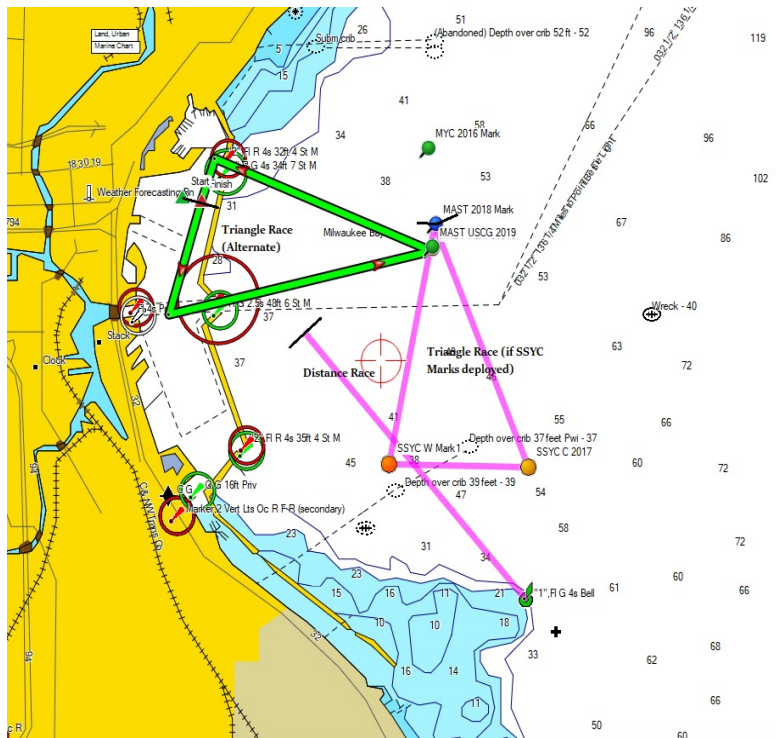
All windward /leeward races will be twice around unless they are shortened by an announcement from the Committee Boat via VHF radio channel 79.

## Triangle Courses and Distance Course.

The **Triangle Course** starts at the MAST mark and is sailed in an anti-clockwise rotation around two SSYC marks.

The **Distance Course** starts outside the main gap, immediately south of the shipping channel then rounds the green navigational “Bell Buoy” and then returns.

**Alternative Courses** may be used in the absence of the SSYC Marks or in heavy seas/winds:



### Inside Gap Start Triangle:

The start and finish lines will be set behind the break wall just to the SW of the North harbor Gap. From the start the racers will head South and through the Main Harbor Gap, then proceed to round the MAST mark to port and head in the North Gap to the finish. The committee boat holds the right to use other marks or directions should conditions warrant a course change.

### Outside Gap Start Triangle:

The start and finish lines will be set at the MAST mark. From the start the racers will head West and through the North Gap, then proceed South to head out the Main Harbor Gap to finish at the MAST mark.

### Other Alternate Triangle Options:

When marks are not available or conditions are not favorable, the Race Committee will work with the Committee Boat to devise an appropriate and safe course.

## Attachment B

### SIGNALS AND TIMES

Time	Flags	Horn	
6:10	RAISE White Flag	1 second	Division 4 warning
6:11	Raise P Flag (Blue with White Square)	1 second	Division 4 preparatory
6:14	Lower P Flag	3 seconds	
6:15	Lower White Flag Raise Blue Flag	1 second	Division 4 start Division 3 Warning
6:16	Raise P Flag (Blue with White Square)	1 second	Division 3 preparatory
6:19	Lower P Flag	3 seconds	
6:20	Lower Blue Flag Raise Yellow Flag	1 second	Division 3 start Division 2 Warning
6:21	Raise P Flag (Blue with White Square)	1 second	Division 2 preparatory
6:24	Lower P Flag	3 seconds	
6:25	Lower Yellow Flag Raise Green Flag	1 second	Division 2 start Division 1 Warning
6:26	Raise P Flag (Blue with White Square)	1 second	Division 1 preparatory
6:29	Lower P Flag	3 seconds	
6:30	Lower Green Flag	1 second	Division1 Start



**Attachment C**

**START AREA**

